



Model No. : LWC6K6-220S540-M  
Product Name : 6.6KW OBC Module



6.6KW OBC Module

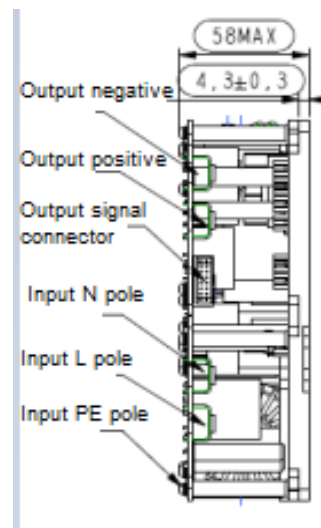
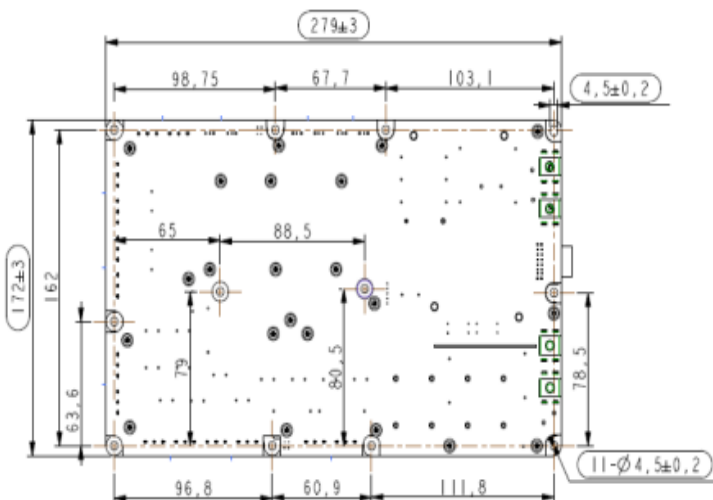
★ Features

- 1 Charging Standard: IEC
- 2 Output Power : 6.6KW
- 3 Input Voltage : 90-264VDC
- 4 Output Voltage : 400~650VDC
- 5 Dimensions : 279x172x58mm
- 6 Cooling System : Module
- 7 Communication Method : CAN-BUS
- 8 Weight: ≤4.5KG

Specification

Description	Technical specifications	Remark
Rated output power	6.6KW	
Input voltage range	90~264VAC	
Output voltage range	400~650VDC	
Maximum output current	14A	
Auxiliary power VCC	9-32VDC	VCC
Efficiency	≥ 95%	Rated input voltage
Voltage accuracy	±1%	
Current accuracy	±3%	
Wake up output	12/24Vdc&200mAmax (WAKE_UP signal)	Wake up BMS/VCU
Wake up method	CAN、AC、CP/PP	Support appointment charging
Communication method	CAN-BUS	
Quiescent Current	≤2mA	Battery current consumption during sleep/stop
Protection characteristics	Input over and under voltage, output over and under voltage, input anti-reverse connection, output over current and short circuit protection, over temperature protection	
Electromagnetic compatibility characteristics	GB/T 18387-2008, EN 55022	
Operating temperature	-40~85°C	
Dimensions	279x172x58mm	
Packaging method	Modular	
Cooling method	Heat sink attached to bottom plate	
Weight	≤4.5KG	
CAN byte speed	250Kbps/500Kbps	

Structural parameters

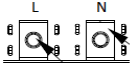
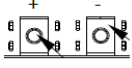
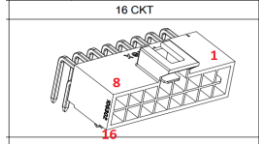


**Model No. : LWC6K6-220S540-M**  
**Product Name : 6.6KW OBC Module**


### Connector information

Function	Maker	Receptacle model	Plug model
Control terminal	MOLEX	105314-1216	105308-1216
AC input	/	M4 binding post	M4 screw
DC output	/	M4 binding post	M4 screw

### Pinout definition

AC input (A)		DC output (B)		Signal control ©			
							
L	Firewire (4mm <sup>2</sup> )	+	Output positive (2.5mm <sup>2</sup> )	1	VCC-	9	VCC+
N	Neutral (4mm <sup>2</sup> )	-	Output negative (2.5mm <sup>2</sup> )	2	LOCK_FB2	10	CP_OUT
G	Ground			3	LOCK+	11	VCU_EN
				4	LOCK-	12	NTC1+
				5	LOCK_FB1	13	NTC1-/NTC2-
				6	CAN-H	14	NTC2+
				7	CAN-L	15	CP
				8	WAKE_UP	16	PP

### Label


**安仁國際股份有限公司**  
 ANNREN TECHNOLOGIES CO., LTD.

**Product Model LWC6K6-220S540-M**  
**Code: LWC6K6-220S540-M-AR01**  
**Serial Number:**

**Input Voltage: 90~264VAC Output Voltage:400~650VDC**  
**Output Current: 14A Output Power: 6.6KW**

OBC

